



# WA11

1.0mm to 1.0mm

Features:  
\* Low VSWR

Applications:  
\* Wireless  
\* Transmitter  
\* Laboratory Test  
\* Radar

### Electrical

Frequency: DC~110GHz  
VSWR: 1.35 max.  
Insertion Loss: 0.6dB max.  
Impedance: 50Ω

### Mechanical

RF Connectors: 1.0mm  
Mating Life Cycle: 2000 cycles  
Outer Conductor: Passivated SUS303 stainless steel or gold plated beryllium copper  
Dielectric: PEEK or CPS or PEI  
Inner Conductor: Gold plated beryllium copper

### Environmental

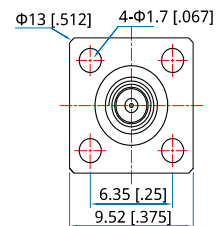
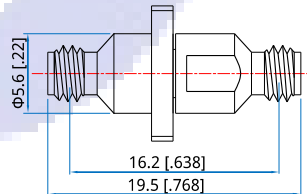
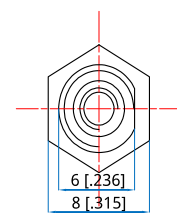
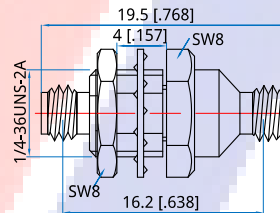
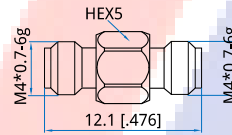
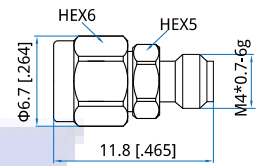
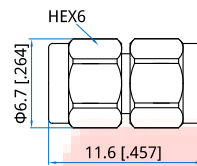
Temperature: -55~+85°C

### How To Order

- WA11-MM** - 1.0mm(m) to 1.0mm(m), Outline A
- WA11-MF** - 1.0mm(m) to 1.0mm(f), Outline B
- WA11-FF** - 1.0mm(f) to 1.0mm(f), Outline C
- WA11H-FF** - 1.0mm(f) to 1.0mm(f), bulk head, Outline D
- WA11L-FF** - 1.0mm(f) to 1.0mm(f), flange mount, Outline E

Customization is available upon request.

### Outline Drawings



Unit: mm [in]  
Tolerance: ±0.2mm  
[±0.008in]