



WFA031K

DC~3GHz, 1000W

Features:
* Low VSWR
* High Attenuation Flatness

Applications:
* Wireless
* Transmitter
* Laboratory Test
* Radar

Electrical

Frequency: DC~3GHz
Attenuation: 30~50dB
Attenuation Accuracy: ± 2 dB
VSWR: 1.35 max.
Impedance: 50 Ω
Average Power^{*1}: 1000W@25°C max.

[1] Derated linearly to 50W@120°C.

How To Order

WFA031K-X-Y-Z

X: Frequency in GHz
Y: Attenuation in dB
Z: Connector type

Connector naming rules:

N - N male

Examples:

To order an attenuator, DC~3GHz, N male to N female, 30dB attenuation, specify WFA031K-3-30-N.

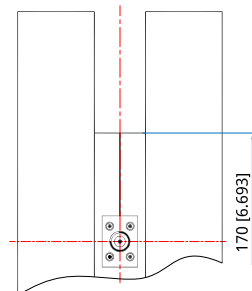
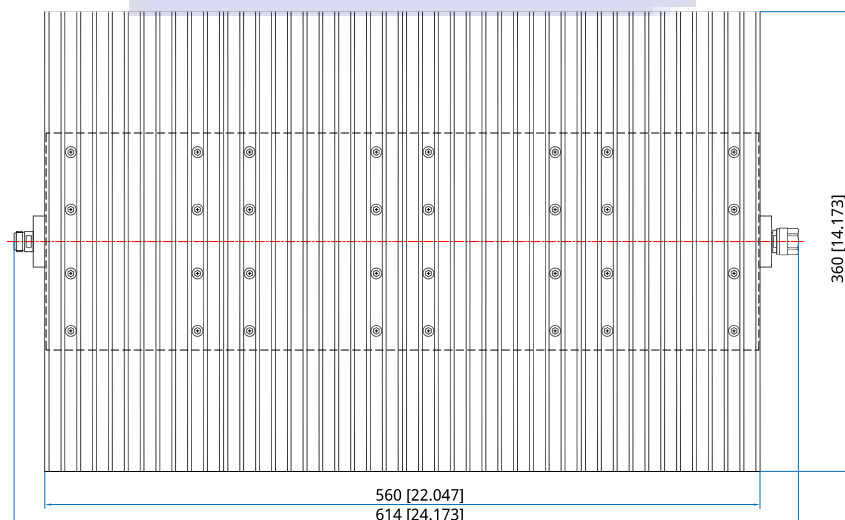
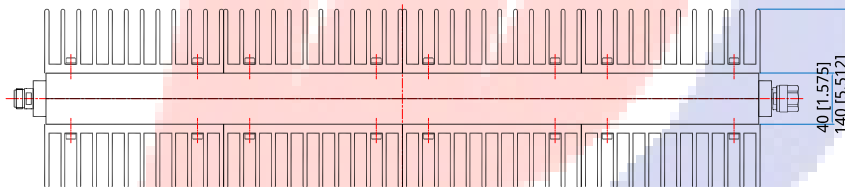
Mechanical

RF Connectors: N

Environmental

Temperature: -55~+125°C

Outline Drawings



Unit: mm [in] Tolerance: ± 2 mm [± 0.08 in]