



WASI

SMA to BMA

Features:
* Low VSWR

Applications:
* Wireless
* Transmitter
* Laboratory Test
* Radar

Electrical

Frequency: DC~18GHz
VSWR: 1.25 max.
1.35 max. (Outline E, F, G)
Impedance: 50Ω

Mechanical

RF Connectors: SMA
BMA
Mating Life Cycle: 500 cycles
Outer Conductor: Passivated stainless steel
Dielectric: PTFE
Inner Conductor: Gold plated beryllium copper

Environmental

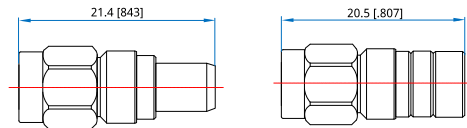
Temperature: -55~+165°C

How To Order

- WASI-MM** - SMA(m) to BMA(m), Outline A
- WASI-MF** - SMA(m) to BMA(f), Outline B
- WASI-FM** - SMA(f) to BMA(m), Outline C
- WASI-FF** - SMA(f) to BMA(f), Outline D
- WASIL-FF** - SMA(f) to BMA(f), Flange mount, Outline E
- WASIL-FF-1** - SMA(f) to BMA(f), Flange mount, Outline F
- WASIL-FF-2** - SMA(f) to BMA(f), Flange mount, Outline G

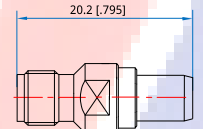
Customization is available upon request.

Outline Drawings

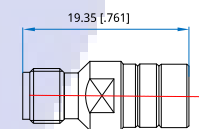


Outline A

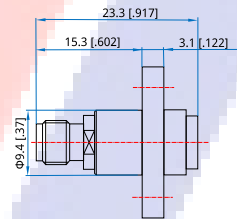
Outline B



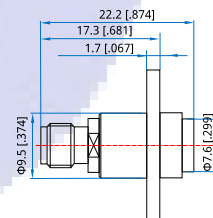
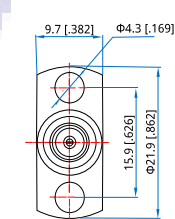
Outline C



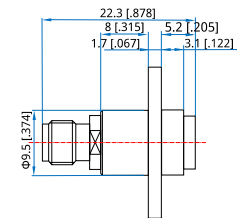
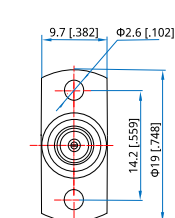
Outline D



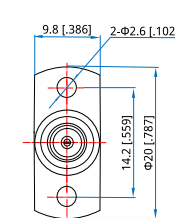
Outline E



Outline F



Outline G



Unit: mm [in]

Tolerance: ±0.2mm [±0.008in]