



WAAA SSMA to SSMA

Features:
* Low VSWR

Applications:
* Wireless
* Transmitter
* Laboratory Test
* Radar

Electrical

Frequency:	DC~26.5GHz
VSWR:	1.25 max. 1.2 max. (flange mount)
Voltage Withstand:	1000V DC
Impedance of Dielectric:	5000MΩ min.
Impedance:	50Ω

Mechanical

RF Connectors:	SSMA
Mating Life Cycle:	500 cycles
Outer Conductor:	Passivated stainless steel
Dielectric:	PTFE
Inner Conductor:	Gold plated beryllium copper

Environmental

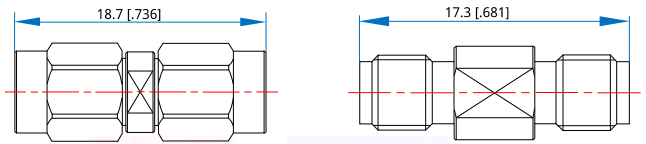
Temperature:	-55~+165°C
--------------	------------

How To Order

- WAAA-MM** - SSMA(m) to SSMA(m), Outline A
- WAAA-FF** - SSMA(f) to SSMA(f), Outline B
- WAAA-MF** - SSMA(m) to SSMA(f), Outline C
- WAAAL-FF** - SSMA(f) to SSMA(f), Flange mount, Outline D

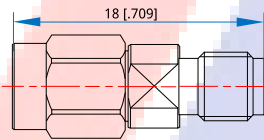
Customization is available upon request.

Outline Drawings

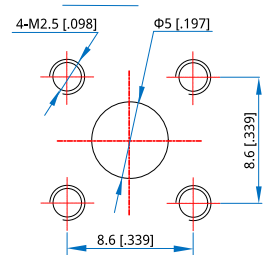
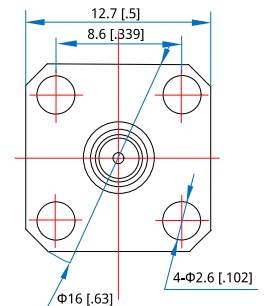
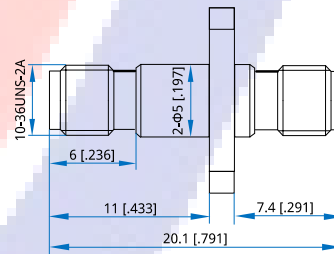


Outline A

Outline B



Outline C



Outline D

Unit: mm [in]
Tolerance: ±0.2mm
[±0.008in]